

LNL-X2210

Intelligent Single Door Controller

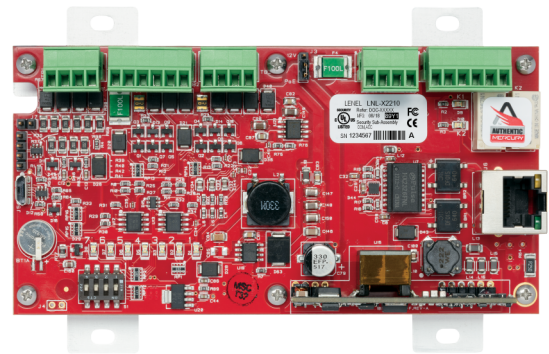
Overview

The LNL-X2210 Intelligent Single Door Controller (ISDC) is an edge device that provides a solution for interfacing one or two readers to a single door within an OnGuard® system. Offering innovation at an economical price point, the LNL-X2210 controller is a high-performance, Ethernet-ready card reader panel that controls a single opening with 802.3af/802.3at compliant Power over Ethernet (PoE). Built on a proven platform, the LNL-X2210 controller seamlessly interfaces to a larger system for flexible, reliable expansion. Easy installation with PoE makes this the logical choice for single door control.

Once configured, the LNL-X2210 controller functions independently of the host and is capable of sophisticated processes while controlling access for a single opening. Without host intervention, the LNL-X2210 controller can relate selected system devices and their activity to other onboard devices, consistently allowing those activities and actions to transpire independently.

The LNL-X2210 controller is capable of interfacing with a wide array of reader technologies for single opening control. Reader ports support separate in/out readers and technologies that include Wiegand, clock and data, RS-485, OSDP™, keypads, LCD and biometrics — resulting in the flexibility, versatility and reliability needed for success.

An alternative configuration is available with OnGuard version 6.6 and higher for the LNL-X2210 controller. The first physical reader port can be configured to support RS-485 communication bus to LNL Door Interfaces (LNL-1300/LNL-1320) or IO devices (LNL-1100/LNL-1200). Up to eight RS-485 addressed devices can be supported on this communication bus. These additional devices must have a local power supply. In this configuration, the second physical reader port on the LNL-X2210 controller is still available for standard single reader interface; it is not available as an OSDP Reader.



Details

- 6 MB of available on-board, non-volatile flash memory
- Firmware stored in flash memory, background download of firmware updates supported
- Optional secondary communications available through a USB to Ethernet connection
- RNDIS support enables USB connection to display controller web configuration pages
- 240,000 cardholders, 50,000 event transaction buffer
- Up to 128 access levels per cardholder
- Programmable card activation and deactivation times and dates
- Individual extended held open and strike times (ADA required)
- Up to sixteen active card formats per LNL-X2210
- PIV, CAC, and TWIC card compatible
- Magnetic stripe, proximity, iClass®, multiClass, MIFARE®, DESFIRE®, biometric template support
- Advanced Encryption Standard (AES) 256-bit algorithm for communications to Series 3 reader and I/O modules; AES 128-bit encryption to Series 2 reader and I/O modules
- AES128 or TLS 1.2 (with AES256 support) communication to OnGuard
- Enhanced anti-passback capabilities: nested global hard or soft anti-passback, timed anti-passback, two person control, designated one or two person control, tail gate control and occupancy limit
- Configurable option for Data at Rest encryption
- Standard or custom end of line resistance

LNL-X2210

Intelligent Single Door Controller

Technical specifications

System

| | |
|---------------------------|---------------------------------|
| Controller type | Main Controller |
| Software compatibility | OnGuard |
| Controller accessory | LNL-200XA, LNL-400XA, LNL-600XA |
| Max. no. of access levels | 128 |
| Max. no. of card formats | 16 |
| Elevator control | No |
| Max. no. of memory | 6 MB |
| PCB only | Yes |

Users/cards

| | |
|------------------------|--------|
| Max no. of cardholders | 240000 |
|------------------------|--------|

Interfaces

| | |
|------------------|--|
| Reader interface | Magstripe, OSDP, OSDP V1, OSDP V2, OSDP V2 Secure Channel, RS485 |
|------------------|--|

Physical

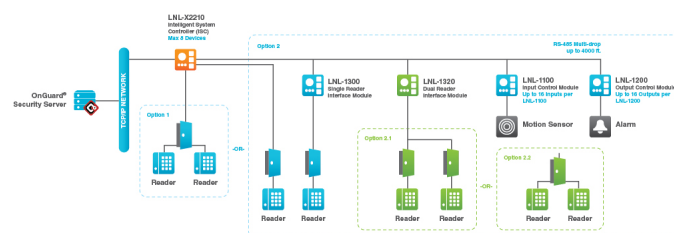
| | |
|---------------------|---------------|
| Physical dimensions | 140 x 70 x 24 |
| Net weight | 125 |

Environmental

| | |
|-----------------------|--------------------------|
| Operating temperature | 0 to +70°C |
| Storage temperature | -55 to +85°C |
| Relative humidity | 5% to 95% non-condensing |
| Environment | Indoor |

Standards & regulation

| | |
|---------------|--------------------------------|
| Compliance | CE, FCC, RoHS, UL 1076, UL 294 |
| Certification | CE, UL |



As a company of innovation, UTC Fire & Security reserves the right to change product specifications without notice. For the latest product specifications, visit UTC Fire & Security online or contact your sales representative.

Last updated on 27 August 2020 - 11:27

