

LNL-3300-ACUXL

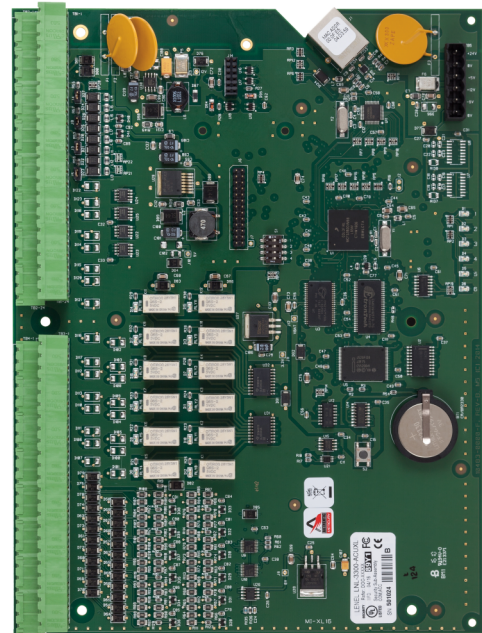
ACU Bridge Series - Networked Intelligent Controller

Introduction

The Lenel® LNL-3300-ACUXL Network Intelligent Controller is designed to facilitate the migration of Facility Commander™ Wnx, Diamond II and Sapphire Pro systems to Lenel's OnGuard® security management system. The LNL-3300-ACUXL controller provides a one-for-one, plug-compatible, OnGuard-ready replacement for ACUXL boards.

The LNL-3300-ACUXL controls up to 16 readers. Each controller supports up to 200,000 cardholders and communicates over LAN via the on-board 10Base-T/100Base-TX Ethernet port. The LNL-3300-ACUXL offers a wide range of features, with a focus on reliability, durability, and ease of installation and maintenance. The controller incorporates two external device ports. Each port is capable of controlling eight readers/interfaces, which are multi-dropped using an RS-485 interface, and connects to existing RRE Remote Reader Electronics, RIM Remote Alarm Input Modules, and RRM Remote Relay Output and IKE Intelligent Keypad Reader Modules.

Readers, badges, and wiring are all reused without modification, ensuring the simplest migration to the OnGuard security solution.



Details

- OnGuard-compatible replacement for ACUXL
- Supports up to 16 readers and associated interfaces through two RS-485 communication ports
- Supports RIMs and RRM for a maximum of 172 fully configurable supervised six-state inputs or 156 fully configurable Form-C outputs
- Local and global alarm masking capabilities initiated from readers, keypads or operat
- Internal power fault detection with UPS capability
- Configurable local and global alarm-to-relay linking
- AES encrypted communication to the server
- Onboard LAN communication using TCP/IP
- LAN and RS-485 communication port for redundant communication paths to the server

LNL-3300-ACUXL

ACU Bridge Series - Networked Intelligent Controller

Technical specifications

System

Controller type	Migration Board
Software compatibility	OnGuard
Software compatibility version	V7.3
Max. no. of memory	---
PCB only	Yes
LCD intrusion keypad	No

Readers/doors

Max. no. of doors	---
Max no. of readers	16

Communication

IP port speed	10 Mbit, 100 Mbit
---------------	-------------------

Inputs/outputs

Max no. of inputs	12
Max no. of outputs	8

Electrical

Operating voltage	12 V
Power supply type	VDC
Current consumption	250 mA

Physical

Physical dimensions	264 x 199 x 27 mm
Net weight	343 g
Shipping weight	650 g

Environmental

Operating temperature	0 to +50°C
Storage temperature	-55 to +85°C
Relative humidity	5 to 95% noncondensing

Standards & regulation

Compliance	CE, FCC, RoHS, UL 294
------------	-----------------------

As a company of innovation, UTC Fire & Security reserves the right to change product specifications without notice. For the latest product specifications, visit UTC Fire & Security online or contact your sales representative.

Last updated on 20 January 2020 - 9:53

