

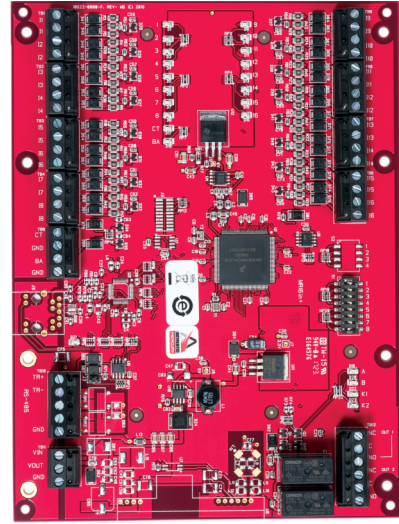
# LNL-1100-S3

## LNL-1100 Input Control Module Series 3

### Overview

Series 3 Lenel® Input Control Module (ICM) provides the access control system with high-speed acknowledgement of critical alarm points in monitored areas. The ICM communicates directly with the Intelligent System Controller (ISC) by either 2-wire or 4-wire RS-485 communication. The ICM has 16 configurable input control points and 2 output control relays. It supports normally open, normally closed, supervised and non-supervised circuits.

The input circuits are scanned using an analog-to-digital converter. The digitized input status signal is software monitored and controlled, so that each input point can be programmed as a supervised or non-supervised alarm point. The output relays can also be configured for fail-safe or failsecure operation. Each relay supports the “On,” “Off,” and “Pulse” Lenel OnGuard® software commands.



### Details

- Grade B, A, and AA line supervision
- 12 or 24 VDC input power
- 16 programmable supervised or non-supervised contacts, standard EOL: 1K/1K ohm, 1%, 1/4 watt
- 2 Form-C 5 A, 28 VDC contacts for load switching
- 2 dedicated unsupervised inputs for (cabinet) tamper and (UPS) power failure status
- On-board termination jumpers
- DIP switch-selectable addressing
- Elevator control, support for 128 floors
- Status LED for host communication and heartbeat
- Variable resistor values for line supervision
- Downloadable firmware
- Advanced Encryption Standard (AES) 128-bit or 256-bit encryption supported, depending on ISC and OnGuard version
- Suitable as replacement for Series 1 and Series 2 boards

# LNL-1100-S3

## LNL-1100 Input Control Module Series 3

### Technical specifications

---

#### System

Controller type	Input/Output Module
Software compatibility	OnGuard
Controller accessory	LNL-200XA, LNL-400XA, LNL-600XA
Elevator control	Yes
PCB only	Yes

#### Interfaces

Host connection	RS485
-----------------	-------

#### Inputs/outputs

Max no. of outputs	2 outputs, Form-C, 5A @ 28Vdc, resistive
--------------------	--

#### Electrical

Operating voltage	12 to 24Vdc $\pm$ 10%, 350mA maximum 12Vdc @ 300mA nominal, 12.27 BTUs 24Vdc @ 220mA nominal, 18.00 BTUs
Current consumption	350 mA

#### Physical

Physical dimensions	152 x 203 x 25 mm
Net weight	182 g
Shipping weight	240 g

#### Environmental

Operating temperature	0 to +70°C
Storage temperature	-55 to +85°C
Relative humidity	0 to 95% noncondensing

#### Standards & regulation

Compliance	CE, RoHS, UL 1076, UL 294
Standards	FCC Part 15, ULC CSA-C22.2, CAN/ULC-S319005, cUL/ORD-C1076

As a company of innovation, UTC Fire & Security reserves the right to change product specifications without notice. For the latest product specifications, visit UTC Fire & Security online or contact your sales representative.

Last updated on 27 August 2020 - 11:27

